

KRISH GROUP PRESENTS



KRISH CIEL

APARTMENTS





KRISH ROSETTE A



KR BUSINESS PARK



KRISH ELEANOR



KRISH ARCH MALL

CONTENTS

1

INTRODUCTION

2

1ST, 4TH & 7TH FLOOR PLANS

3

2ND, 3RD, 5TH & 6TH FLOOR PLANS

4

3 BHK FLOOR PLANS

5

4BHK FLOOR PLANS

KRISH CIEL
APARTMENTS

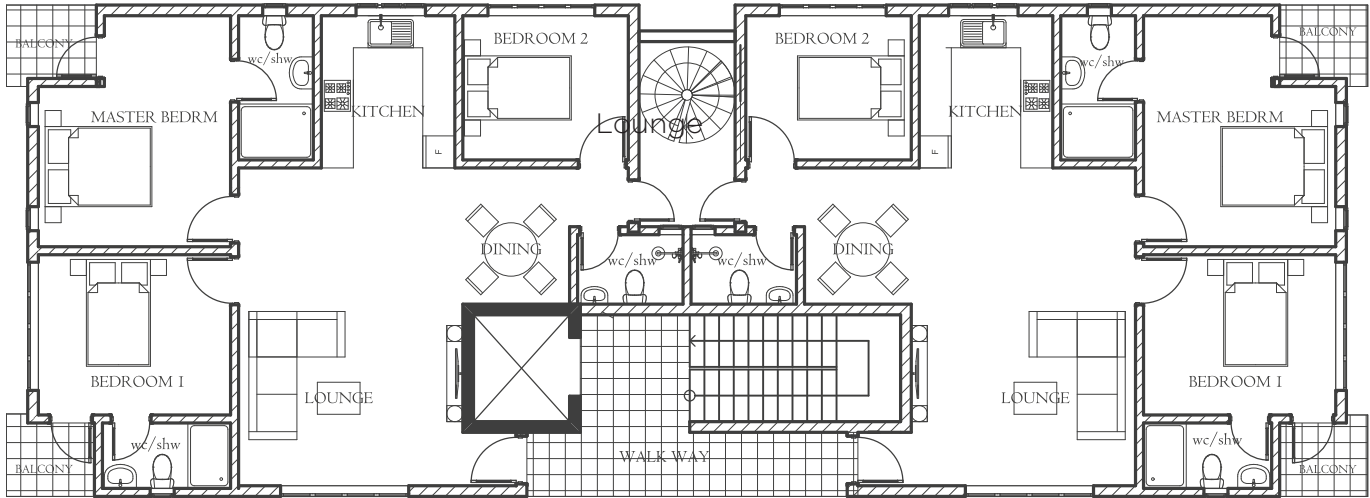


KRISH CIEL is a condominium flat situated on Plot 65 along Ssemawata Road in Ntinda Kampala.

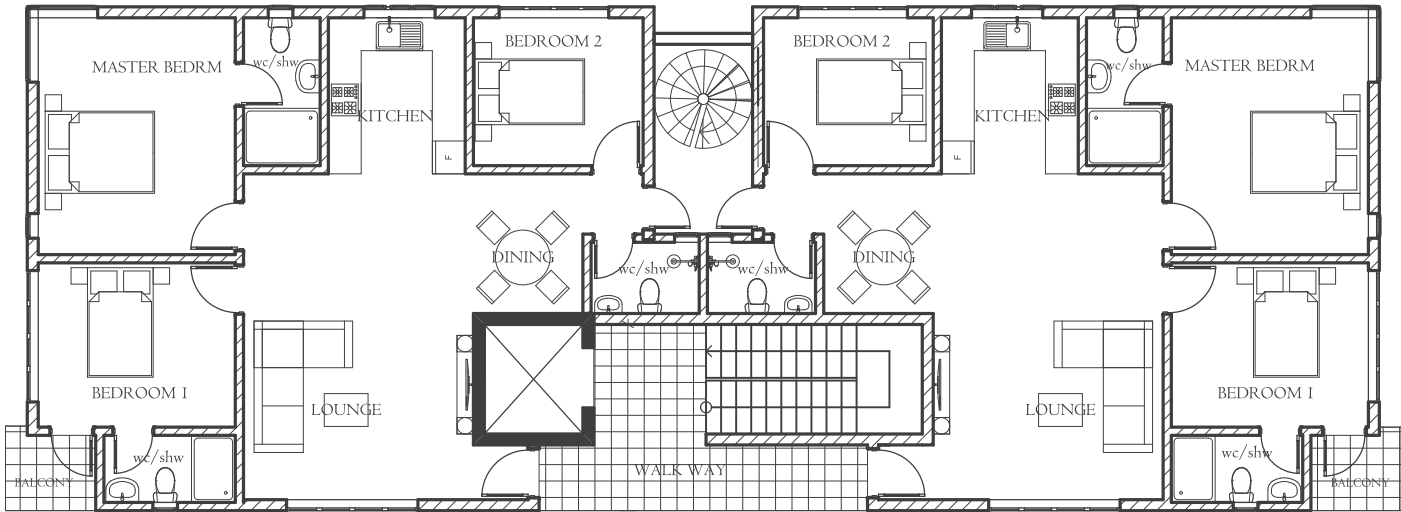
Its consisting 3BHK and 4BHK Duplex apartments that have been built on standard.

Home Loans are available from all major commercial Banks.
Private Financing is also available.

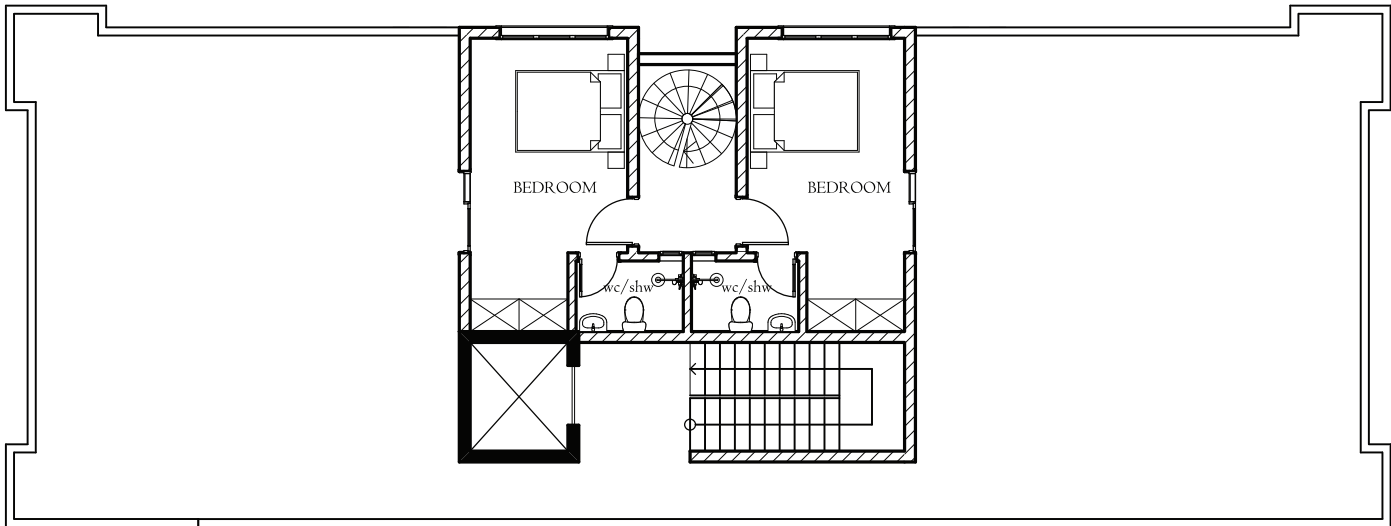
1ST, 4TH & 6TH
FLOOR PLANS



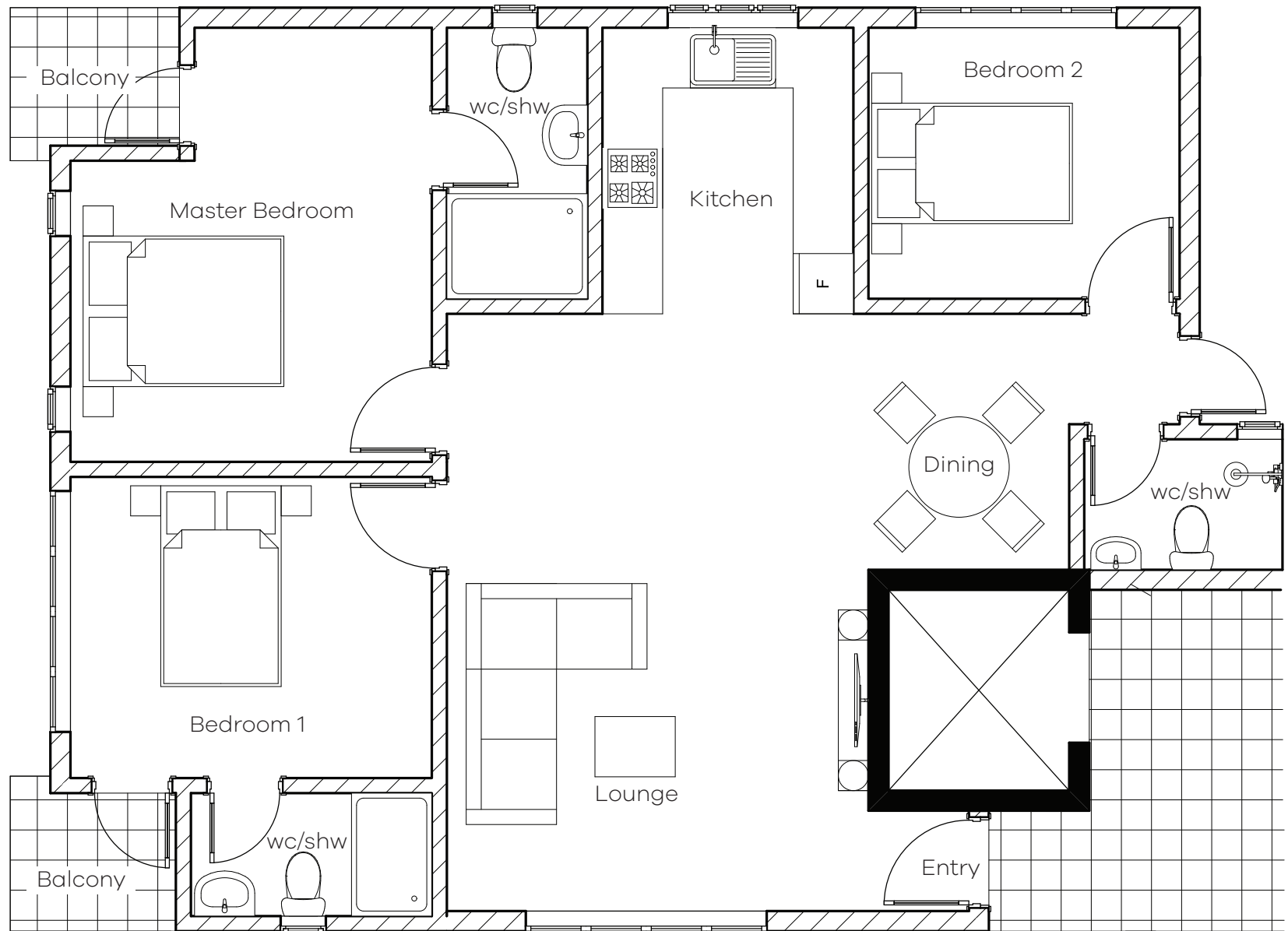
2ND, 3RD, 5TH & 6TH
FLOOR PLANS



7TH FLOOR PLAN



3BHK UNIT



Master Bedroom
3.0m x 3.4m

Bedroom 1
4.3m x 3.4m

Bedroom 2
3.1m x 2.7m

Lounge
6.5m x 4.2m

Dining
3.1m x 1.8m

Shower 1
2.7m x 1.4m

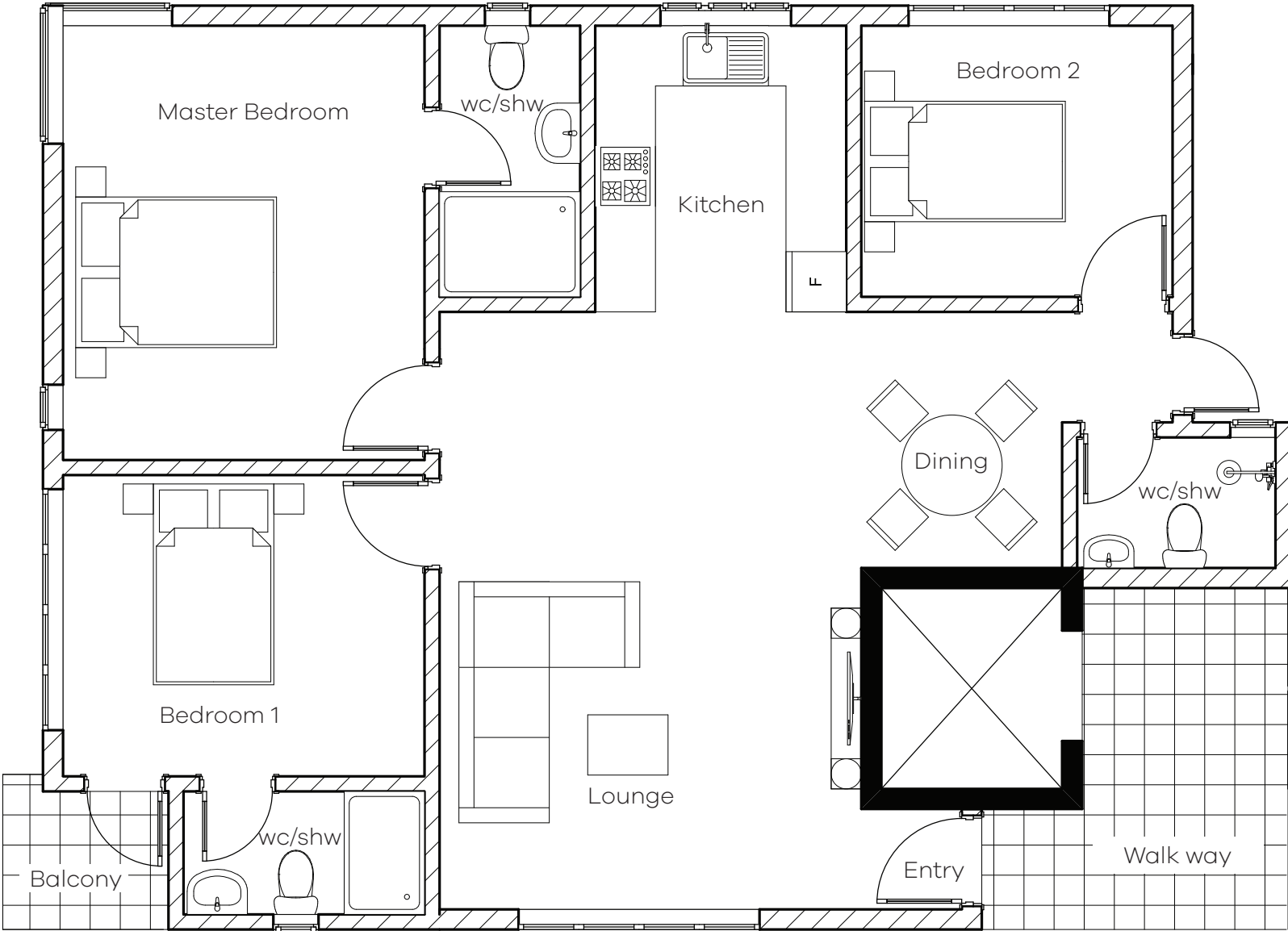
Shower 2
2.4m x 1.3m

Shower 3
2.0m x --

Balconies
1.6m x 1.3m

Kitchen
2.5m x 2.7m

4BHK DUPLEX (LOWER)



Master Bedroom
4.5m x 3.6m

Bedroom 1
3.6m x 3.0m

Bedroom 2
3.1m x 2.7m

Lounge
6.5m x 4.2m

Dining
3.1m x 1.8m

Shower 1
2.7m x 1.4m

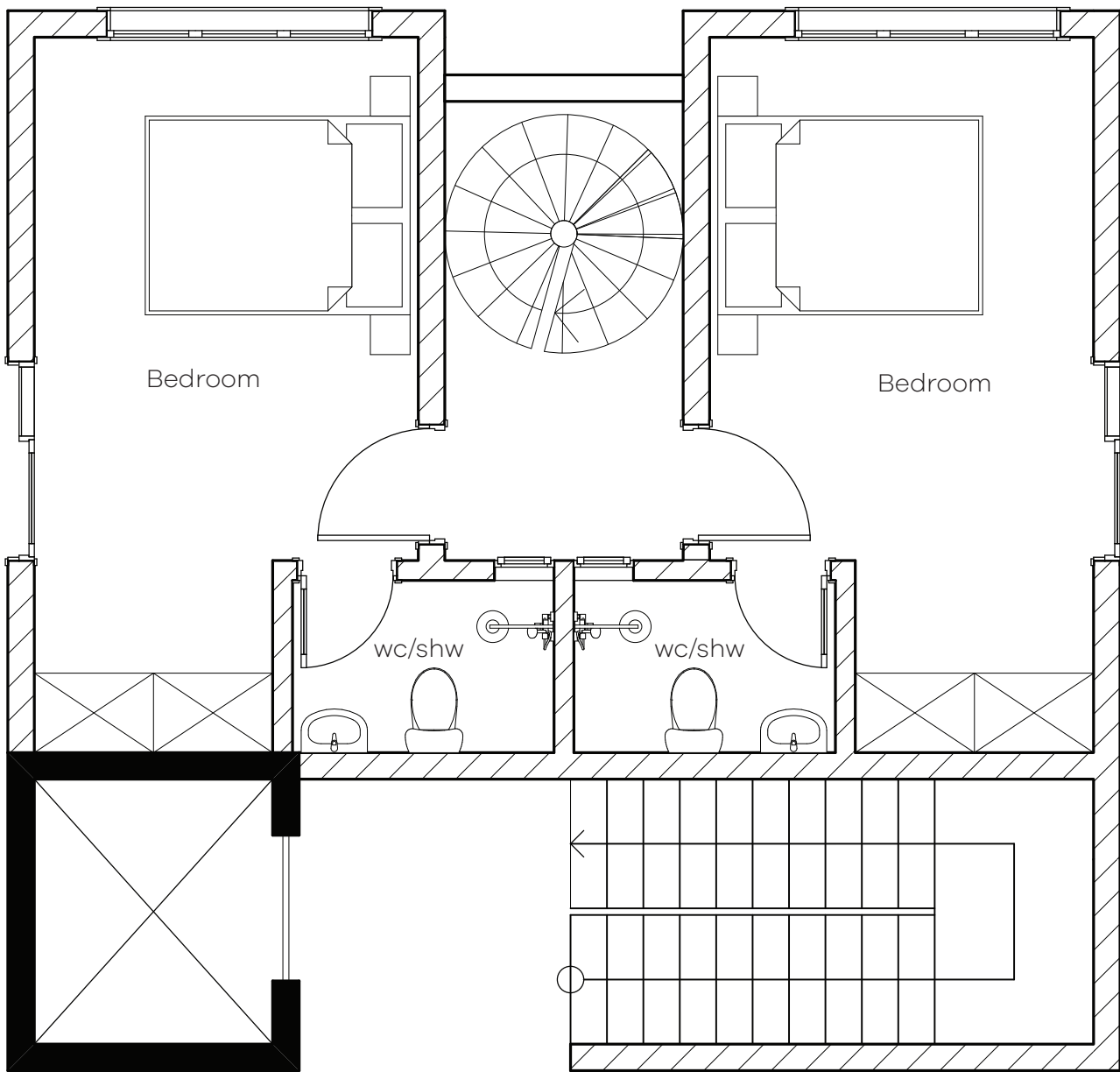
Shower 2
2.4m x 1.3m

Shower 3
2.0m x --

Kitchen
2.5m x 2.7m

Balconies
1.6m x 1.3m

4BHK DUPLEX (UPPER)



Bedroom 1
3.9m x 3.1m

Terrace 1
9.2m x 8.3m

Terrace 2
9.2m x 8.3m



KRISH CIEL

APARTMENTS

KRISH INFRASTRUCTURE LIMITED

Main Office

Plot No. 7, Kataza Close, Next to City Royal Hotel
Opp. Bugolobi Shell Petrol Station,
Bugolobi, Kampala, Uganda
102, Ground floor, Kailash Apartment.

Site Location



SCAN FOR LOCATION

Plot 65
Ssemawata Road
Ntinda Kampala

Email:

krishgroup7@gmail.com
krishgroup2006@yahoo.com

Web:

www.krishgroupuganda.com

Contact:

+256 701 292556 or +256 783 572335

"Experience the Lifestyle."



This brochure is for presentation purpose only and cannot be considered as legal document.

